

(SVHC)

26

OJ  
2025.08

SGS

SHP25-027766

2025 08 28

2025 08 28 ~ 2025 09 04

SVHC

(i) ( 2025 6 25 REACH ) 250  
(SVHC)

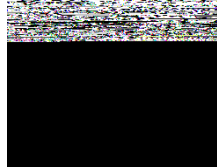
SVHC

(i) 1 (SVHC)  
(ii) REACH ) 5 (SVHC) ( 1907/2006

REACH	250	SVHC	0.1%	
(w/w)				
REACH	6	SVHC	0.1% (w/w)	

Carol Luo

Scan to see the report



(SVHC)

1.

<http://echa.europa.eu/web/guest/candidate-list-table>

2. REACH

2.1

1907/2006 EC 33 57 59  
0.1%

1907/2006 EC 57  
59 (a) 1 / / 7 4 (b)  
0.1%

2021 1 5 0.1% w/w  
SVHC 2008/98/EC ECHA  
SCIP

2.2

SVHC

31 1907/2006 REACH

2.3

0.1% (w/w) / 1272/2008 CLP  
1907/2006 REACH

(SDS)

- 1272/2008 CLP  
- 1272/2008 CLP  
1272/2008 CLP ;  
- 1272/2008 CLP

(a) 1 (w/w)

0.2

(b) PBT vPvB 0.1 (w/w)

(c) 0.1

(w/w)

(d)

3. SVHC SVHC

SVHC

(SVHC)

SHAEC25022613806

2025 09 04

3

13

SHA25-02261385.A25385.A25385.A25385.

(SVHC)

**SVHC**

		CAS No.	001 (%)	RL (%)
-	SVHC	-	ND	-

**SVHC**

		CAS No.	001 (%)	RL (%)
/	SVHC	-	ND	-

(1) SVHC RL SVHC SVHC  
 (2) RL = ( RL RL )  
 ND = ( RL) ND SVHC  
 (3) \*  
 \*\*

ICP-OES  
 ICP-OES  
 RL = 0.01% ( (VI) )  
 RL= 0.001% ( RL=0.005%( ) (VI) RL= 0.005%(  
 ) RL=0.060%  
 (4) § (CAS No.: 90-94-8) (CAS No.: 101-61-1) 0.1%(w / w)  
 SVHC

(5)  
 (6) /  
 (7) / = SVHC

ILAC-G8:09/2019

w=0

(SVHC)

## SVHC:

			CAS No.	RL (%)
I	1	4,4'- (MDA)	101-77-9	0.100
I	2	2,4,6- -5- ( )	81-15-2	0.100
I	3	C10-13 ( )	85535-84-8	0.100
I	4		120-12-7	0.100
I	5	(BBP)	85-68-7	0.100
I	6	(2- ) (DEHP)	117-81-7	0.100
I	7	(TBTO)	56-35-9	0.100
I	8	*	7646-79-9	0.010
I	9	*	1303-28-2	0.010
I	10	*	1327-53-3	0.010
I	11	(DBP)	84-74-2	0.100
I	12	(HBCDD) HBCDD, -HBCDD, -HBCDD) ( -	-	0.100
I	13	*	7784-40-9	0.010
I	14	*	10588-01-9 /7789-12-0	0.010
I	15	*	15606-95-8	0.010
II	16	2,4-	121-14-2	0.100
II	17	**	90640-80-5	0.100
II	18	**	90640-81-6	0.100
II	19	**	91995-15-2	0.100
II	20	**	91995-17-4	0.100
II	21	**	90640-82-7	0.100
II	22		84-69-5	0.100
II	23	*	7758-97-6	0.010
II	24	(C.I. 104)*	12656-85-8	0.010
II	25	(C.I. 34)*	1344-37-2	0.010
II	26	**	65996-93-2	0.100
II	27	(2- )	115-96-8	0.100
II	28		79-06-1	0.100
III	29	*	7789-09-5	0.010
III	30	*	-	0.010
III	31	*	12179-04-3 /1303-96-4 /1330-43-4	0.010
III	32	*	7789-00-6	0.010
III	33	*	7778-50-9	0.010
III	34	*	7775-11-3	0.010
III	35	*	12267-73-1	0.010
III	36		79-01-6	0.100
IV	37		110-80-5	0.100

(SVHC)

			CAS No.	RL (%)
IV	38		109-86-4	0.100
IV	39	, , *	-	0.010
IV	40	*	1333-82-0	0.010
IV	41	*	513-79-1	0.010
IV	42	*	71-48-7	0.010
IV	43	*	10141-05-6	0.010
IV	44	*	10124-43-3	0.010
V	45	1,2,3-	96-18-4	0.100
V	46	1,2- - (C6-8 ) ( C7)	71888-89-6	0.100
V	47	1,2- - (C7-11 ) ( )	68515-42-4	0.100
V	48	1- -2-	872-50-4	0.100
V	49		111-15-9	0.100
V	50		302-01-2 /7803-57-8	0.100
V	51	*	7789-06-2	0.010
VI	52	1,2-	107-06-2	0.100
VI	53	4,4'- -3,3'-	101-14-4	0.100
VI	54	2-	90-04-0	0.100
VI	55		140-66-9	0.100
VI	56	*	-	0.010
VI	57	*	7778-39-4	0.010
VI	58		111-96-6	0.100
VI	59		117-82-8	0.100
VI	60	*	7778-44-1	0.010
VI	61	*	24613-89-6	0.010
VI	62		25214-70-4	0.100
VI	63	*	13424-46-9	0.010
VI	64	*	6477-64-1	0.010
VI	65	*	15245-44-0	0.010
VI	66	N,N-	127-19-5	0.100
VI	67	*	49663-84-5	0.010
VI	68		77-09-8	0.100
VI	69	*	11103-86-9	0.010
VI	70	*	3687-31-8	0.010
VI	71	*	-	0.010
VII	72	C.I. 26§	2580-56-5	0.100
VII	73	C.I. 3§	548-62-9	0.100
VII	74	(TEGDME)	112-49-2	0.100
VII	75	(EGDME)	110-71-4	0.100
VII	76	4,4'- ( ) ( )	90-94-8	0.100
VII	77	4,4'- ( )-4''- §	561-41-1	0.100
VII	78	*	1303-86-2	0.010

## (SVHC)

				CAS No.	RL (%)		
VII	79			75-12-7	0.100		
VII	80		*	17570-76-2	0.010		
VII	81	N,N,N',N'-	-4,4'-	( )	101-61-1	0.100	
VII	82	1,3,5- (	)-1,3,5-	-2,4,6-(1H,	2451-62-9	0.100	
		3H,5H)-	(TGIC)				
VII	83		C.I. 4§	6786-83-0	0.100		
VII	84	1,3,5- -[(2S	2R)-2,3-	]1,3,5-	-	59653-74-6	0.100
		2,4,6-(1H, 3H, 5H)-	( -TGIC)				
VIII	85		*	69011-06-9	0.010		
VIII	86	1,2-	- ( )	84777-06-0	0.100		
VIII	87			629-14-1	0.100		
VIII	88		1-	106-94-5	0.100		
VIII	89	3-	-2-	-2-(3-	)1,3-	143860-04-2	0.100
VIII	90						

(SVHC)

				CAS No.	RL (%)
VIII	116		*	1317-36-8	0.010
VIII	117		*	12036-76-9	0.010
VIII	118		*	1314-41-6	0.010
VIII	119		*	12060-00-3	0.010
VIII	120		*	12626-81-2	0.010
VIII	121			625-45-6	0.100
VIII	122	1,2-		75-56-9	0.100
VIII	123	N,N-		68-12-2	0.100
VIII	124	N-		79-16-3	0.100
VII	125			776297-69-9	0.100
VII	126	-		97-56-3	0.100
VII	127	2-		95-53-4	0.100
VII	128			72629-94-8	0.100
VIII	129		*	12065-90-6	0.010
VIII	130		*	8012-00-8	0.010
VIII	131		*	68784-75-8	0.010
VIII	132		*	11120-22-2	0.010
VIII	133		*	62229-08-7	0.010
VIII	134		*	78-00-2	0.010
VIII	135		*	12202-17-4	0.010
VIII	136			307-55-1	0.100
VIII	137		*	1319-46-6	0.010
VIII	138		*	12141-20-7	0.010
IX	139	4- ( )		-	0.100
IX	140		(APFO)**	3825-26-1	0.100
IX	141		*	1306-19-0	0.010
IX	142			7440-43-9	0.010
IX	143		(DPP)	131-18-0	0.100
IX	144		(PFOA)	335-67-1	0.100
X	145		*	1306-23-6	0.010
X	146			84-75-3	0.100
X	147	C.I.	28	573-58-0	0.100
X	148	C.I.	38	1937-37-7	0.100
X	149	2-		96-45-7	0.100
X	150		*	301-04-2	0.010
X	151			25155-23-1	0.100
XI	152		( )	68515-50-4	0.100
XI	153		*	10108-64-2	0.010
XI	154		*	-	0.010
XI	155		*	7632-04-4	0.010
XII	156	2-(2H- -2- )-4,6- 328)	(UV-	25973-55-1	0.100

SHAEC25022613806

2025 09 04

9 13

(SVHC)

		CAS No.	RL (%)
--	--	---------	--------

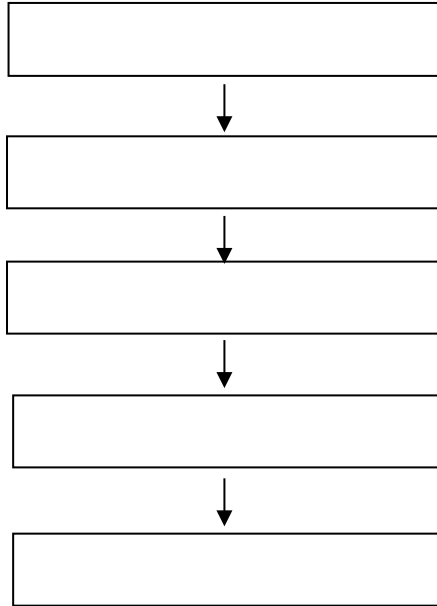
## (SVHC)

					CAS No.	RL (%)
XIX	187			(D6)	540-97-6	0.100
XIX	188			(EDA)	107-15-3	0.100
XIX	189				7439-92-1	0.010
XIX	190			(D4)	556-67-2	0.100
XIX	191				61788-32-7	0.100
XX	192	1,7,7-	-3-(	) [2.2.1] -2-	15087-24-8	0.100
			(3-	)		
XX	193	4,4'-(1,3-	)	(1,3-DMBBP)	6807-17-6	0.100
XX	194		(k)	(BkF)	207-08-9	0.100
XX	195			(FLT)	206-44-0	0.100
XX	196			(PHE)	85-01-8	0.100
XX	197			(PYR)	129-00-0	0.100
XXI	198	2,3,3,3-	-2-(	)	-	0.100
			(	)(HFPO-DA)		
XXI	199		2-		110-49-6	0.100
XXI	200		4-	(PTBP)	98-54-4	0.100
XXI	201	(4-	)	(TNPP)	-	0.100
XXII	202	2-	-2-	-4'-	119313-12-1	0.100
XXII	203	2-	-1-(4-	)-2-	71868-10-5	0.100
XXII	204			-1-	71850-09-4	0.100
XXII	205				-	0.100
XXIII	206		1-		1072-63-5	0.100
XXIII	207		2-		693-98-1	0.100
XXIII	208				94-26-8	0.100
XXIII	209		(	) **	22673-19-4	0.100
XXIV	210				143-24-8	0.100
XXIV	211			) **	-	0.100
XXV	212		1,4-		123-91-1	0.100
XXV	213		(BMP);	(TBNPA);	-	0.100
		2,3-	-1-	(2,3-DBPA)		
XXV	214					

## (SVHC)

			CAS No.	RL (%)
XXVI	222	S-( [5.2.1.0'2,6] -3- -8( 9)- ) O-( 2- ) O-( 2- )	255881-94-8	0.100
XXVI	223	- (2- )	1067-53-4	0.100
XXVII	224	N-	924-42-5	0.100
XXVIII	225	1,2- (2,4,6- )	37853-59-1	0.100
XXVIII	226	A	79-94-7	0.100
XXVIII	227	S	80-09-1	0.100
XXVIII	228	*	13701-59-2	0.005
XXVIII	229	(2- )	-	0.100
XXVIII	230		4247-02-3	0.100
XXVIII	231		108-78-1	0.100
XXVIII	232		-	0.100
XXVIII	233	*	-	0.060
XXIX	234	(4- )	80-07-9	0.100
XXIX	235	(2,4,6- )	75980-60-8	0.100
XXX	236	2,4,6-	732-26-3	0.100
XXX	237	2-(2'- 5'- ) (UV-329)	3147-75-9	0.100
XXX	238	2-(4- )-2-( )-1-(4- )- 1- (PI-379)	119344-86-4	0.100
XXX	239	(UV-326)	3896-11-5	0.100
XXX	240	2-	-	0.100
XXXI	241		80-43-3	0.100
XXXI	242		115-86-6	0.100
XXXII	243	6-[(C10-C13)- -( , )-2,5- -1- ]	2156592-54-8	0.100
XXXII	244	O,O,O-	597-82-0	0.100
XXXII	245		107-51-7	0.100
XXXII	246		338-83-0	0.100
XXXII	247		192268-65-8	0.100
XXXIII	248	( )	17928-28-8	0.100
XXXIII	249		141-62-8	0.100
XXXIII	250	51	-	0.100
/	251		108-46-3	0.100
/	252		141-63-9	0.100
/	253		110-54-3	0.100
/	254	4,4'- (BPF)	620-92-8	0.100
/	255	4,4'-[2,2,2'- 1-( ) ] (BPAF)	-	0.100
/	256	(DBDPE)	84852-53-9	0.100

(SVHC)



(SVHC)



SGS

\*\*\*

\*\*\*