



SHAEC25022613804

2025 09 04

1

13

(SVHC)

56

OJ
2025.08

SGS

SHP25-027766

2025 08 28

2025 08 28 ~ 2025 09 04

SVHC

(i) (2025 6 25 REACH) 250
(SVHC)

SVHC

(i) 1 (SVHC)
(ii) REACH) 5 (SVHC) (1907/2006

œš /

REACH (w/w)	250 SVHC	œ 0.1%	
REACH 6	SVHC	œ 0.1% (w/w)	



Carol Luo

Scan to see the report





(SVHC)

1.

<http://echa.europa.eu/web/guest/candidate-list-table>

2. REACH

2.1

1907/2006 EC 33 57 59
0.1%

1907/2006 EC 57
59 (a) 1 / / 7 4 (b)
0.1%

2021 1 5 SVHC 2008/98/EC 0.1% w/w
SCIP ECHA

2.2

SVHC

31 1907/2006 REACH

2.3

0.1% (w/w) / 1272/2008 CLP
1907/2006 REACH

(SDS)

- 1272/2008 CLP
- 1272/2008 CLP
1272/2008 CLP ;
- 1272/2008 CLP

(a) ÜÇ (w/w)

(b) PBT vPvB ÜBİÄ

ÜBİÇ (w/w)

(c) ÜBİÇ

(w/w)

(d)

3. SVHC

SVHC

SVHC

SHAEC25022613804

2025 09 04



(SVHC)

j k l m 9 n SVHC š >

		CAS No.	001 (%)	RL (%)
-	SVHC	-	ND	-

< Ćn SVHC š >

		CAS No.	001 (%)	RL (%)
/	SVHC	-	ND	-

È ~ /

(1) SVHC RL SVHC SVHC

(2) RL = (ù RL RL)

ND = (RL) ND SVHC

(3) *

**

ICP-OES

ICP-OES

RL = 0.01% ((VI))

RL= 0.001%) RL=0.005%() (VI) RL= 0.005%(

RL=0.060%

(4) § (CAS No.: 90-94-8) (CAS No.: 101-61-1) ù 0.1%(w / w)

SVHC

(5)

(6)

(7) / = SVHC

ILAC-G8:09/2019

w=0

(SVHC)

			CAS No.	RL (%)
IV	38		109-86-4	0.100
IV	39	, , *	-	0.010
IV	40	*	1333-82-0	0.010
IV	41	*	513-79-1	0.010
IV	42	*	71-48-7	0.010
IV	43	*	10141-05-6	0.010
IV	44	*	10124-43-3	0.010
V	45	1,2,3-	96-18-4	0.100
V	46	1,2- - (C6-8) (C7)	71888-89-6	0.100
V	47	1,2- - (C7-11) ()	68515-42-4	0.100
V	48	1- -2-	872-50-4	0.100
V	49		111-15-9	0.100
V	50		302-01-2 /7803-57-8	0.100
V	51	*	7789-06-2	0.010
VI	52	1,2-	107-06-2	0.100
VI	53	4,4'- -3,3'-	101-14-4	0.100
VI	54	2-	90-04-0	0.100
VI	55		140-66-9	0.100
VI	56	*	-	0.010
VI	57	*	7778-39-4	0.010
VI	58		111-96-6	0.100
VI	59		117-82-8	0.100
VI	60	*	7778-44-1	0.010
VI	61	*	24613-89-6	0.010
VI	62		25214-70-4	0.100
VI	63	*	13424-46-9	0.010
VI	64	*	6477-64-1	0.010
VI	65	*	15245-44-0	0.010
VI	66	N,N-	127-19-5	0.100
VI	67	*	49663-84-5	0.010
VI	68		77-09-8	0.100
VI	69	*	11103-86-9	0.010
VI	70	*	3687-31-8	0.010
VI	71	*	-	0.010
VII	72	C.I. 26§	2580-56-5	0.100
VII	73	C.I. 3§	548-62-9	0.100
VII	74	(TEGDME)	112-49-2	0.100
VII	75	(EGDME)	110-71-4	0.100
VII	76	4,4'- () ()	90-94-8	0.100
VII	77	4,4'- ()-4''- §	561-41-1	0.100
VII	78	*	1303-86-2	0.010

(SVHC)

			CAS No.	RL (%)
VII	79		75-12-7	0.100
VII	80		17570-76-2	0.010
VII	81	N,N,N',N'- -4,4'- ()	101-61-1	0.100
VII	82	1,3,5- ()-1,3,5- -2,4,6-(1H, 3H,5H)- (TGIC)	2451-62-9	0.100
VII	83	C.I. 4§	6786-83-0	0.100
VII	84	1,3,5- -[(2S 2R)-2,3-]-1,3,5- - 2,4,6-(1H, 3H, 5H)-	59653-74-6	0.100
VIII	85		69011-06-9	0.010
VIII	86	1,2- - ()	84777-06-0	0.100
VIII	87		629-14-1	0.100
VIII	88	1-	106-94-5	0.100
VIII	89	3- -2- -2-(3-)-1,3-	143860-04-2	0.100
VIII	90		-	0.100
VIII	91	4,4'- -3,3'-	838-88-0	0.100
VIII	92	4,4'-	101-80-4	0.100
VIII	93	4-	60-09-3	0.100
VIII	94	2,4-	95-80-7	0.100
VIII	95	4- ()	-	0.100
VIII	96	2- -5-	120-71-8	0.100
VIII	97		* 51404-69-4	0.010
VIII	98	4-	92-67-1	0.100
VIII	99	(DecaBDE)	1163-19-5	0.100
VIII	100	-1,2- , - -1,2-	-	0.100
VIII	101		123-77-3	0.100
VIII	102	(DBTC)	683-18-1	0.100
VIII	103		64-67-5	0.100
VIII	104		605-50-5	0.100
VIII	105		77-78-1	0.100
VIII	106		88-85-7	0.100
VIII	107	() *	12578-12-0	0.010
VIII	108	C16-18- *	91031-62-8	0.010
VIII	109		110-00-9	0.100
VIII	110		2058-94-8	0.100
VIII	111		376-06-7	0.100
VIII	112	, 1- , 4- , 3-	-	0.100
VIII	113		* 13814-96-5	0.010
VIII	114		* 20837-86-9	0.010
VIII	115		* 10099-74-8	0.010



SHAEC25022613804

2025 09 04

8

13

(SVHC)

			CAS No.	RL (%)
VIII	116	*	1317-36-8	0.010
VIII	117	*	12036-76-9	0.010
VIII	118	*	1314-41-6	0.010
VIII	119	*	12060-00-3	0.010
VIII	120	*	12626-81-2	0.010
VIII	121		625-45-6	0.100
VIII	122	1,2-	75-56-9	0.100
VIII	123	N,N-	68-12-2	0.100
VIII	124	N-	79-16-3	0.100
VIII	125		776297-69-9	0.100
VIII	126	-	97-56-3	0.100
VIII	127	2-	95-53-4	0.100
VIII	128			

(SVHC)

						CAS No.	RL (%)
XII	157	2-	-2-	-4,6-	(UV-320)	3846-71-7	0.100
XII	158		- (2-) (DOTE)	15571-58-1	0.100
XII	159				*	7790-79-6	0.010
XII	160				*	10124-36-4 /31119-53-6	0.010
XII	161		- (2-) (DOTE)	-	0.100
XII	161		- (2-) (MOTE)	-	0.100
XIII	162	1,2-		(C6-10)	/ 1,2-	-	0.100
XIII	163	5-	-2-(2,4-		-3- -1-)-5-	-	0.100
XIII	163	-1,3-	[1] 5-		-2-(4,6-	-	0.100
XIII	163	-3- -1-)-5-	-1,3-	[2] [[1]	-	0.100
XIII	163	[2]]	-	0.100
XIV	164		1,3-			1120-71-4	0.100
XIV	165	2,4-	-6-(5-		-2-	3864-99-1	0.100
XIV	166	2-(2H-	-2-)-4-()-6-()	36437-37-3	0.100
XIV	167		(UV-327)			98-95-3	0.100
XIV	168		(UV-350)			-	0.100
XV	169		(a)			50-32-8	0.100
XVI	170	4,4'-			(A)	80-05-7	0.100
XVI	171	4-	()			-	0.100
XVI	172		(PFDA)			-	0.100
XVI	173					80-46-6	0.100
XVII	174		-1-			-	0.100
XVIII	175	()	()			-	0.100
XVIII	176		(BaA)			56-55-3	0.100
XVIII	177		*			10325-94-7	0.010
XVIII	178		*			513-78-0	0.010
XVIII	179		*			21041-95-2	0.010
XVIII	180		(CHR)			218-01-9	0.100
XVIII	181	1,3,4-	-2,5-		(RP-HP)[-	0.100
XVIII	181	4-			ÜBİÇÓ&	-	0.100
XIX	182		1,260012E}TJ /FAAABE 10 Tt1.900.153€				

SHAEC25022613804

2025 09 04

(SVHC)

			CAS No.	RL (%)
XXVI	222	S-([5.2.1.0'2,6] -3- -8(9)-) O-(2-) O-(2-)	255881-94-8	0.100
XXVI	223	- (2-)	1067-53-4	0.100
XXVII	224	N-	924-42-5	0.100
XXVIII	225	1,2- (2,4,6-)	37853-59-1	0.100
XXVIII	226	A	79-94-7	0.100
XXVIII	227	S	80-09-1	0.100
XXVIII	228	*	13701-59-2	0.005
XXVIII	229	(2-)	-	0.100
XXVIII	230		4247-02-3	0.100
XXVIII	231		108-78-1	0.100
XXVIII	232		-	0.100
XXVIII	233	*	-	0.060
XXIX	234	(4-)	80-07-9	0.100
XXIX	235	(2,4,6-)	75980-60-8	0.100
XXX	236	2,4,6-	732-26-3	0.100
XXX	237	2-(2'- 5'-) (UV-329)	3147-75-9	0.100
XXX	238	2-(4-)-2-()-1-(4-)- 1- (PI-379)	119344-86-4	0.100
XXX	239	(UV-326)	3896-11-5	0.100
XXX	240	2-	-	0.100
XXXI	241		80-43-3	0.100
XXXI	242		115-86-6	0.100
XXXII	243	6-[(C10-C13)- -(,)-2,5- -1-]	2156592-54-8	0.100
XXXII	244	O,O,O-	597-82-0	0.100
XXXII	245		107-51-7	0.100
XXXII	246		338-83-0	0.100
XXXII	247		192268-65-8	0.100
XXXIII	248	()	17928-28-8	0.100
XXXIII	249		141-62-8	0.100
XXXIII	250	51	-	0.100
/	251		108-46-3	0.100
/	252		141-63-9	0.100
/	253		110-54-3	0.100
/	254	4,4'- (BPF)	620-92-8	0.100
/	255	4,4'-[2,2,2'- 1-()] (BPAF)	-	0.100
/	256	(DBDPE)	84852-53-9	0.100



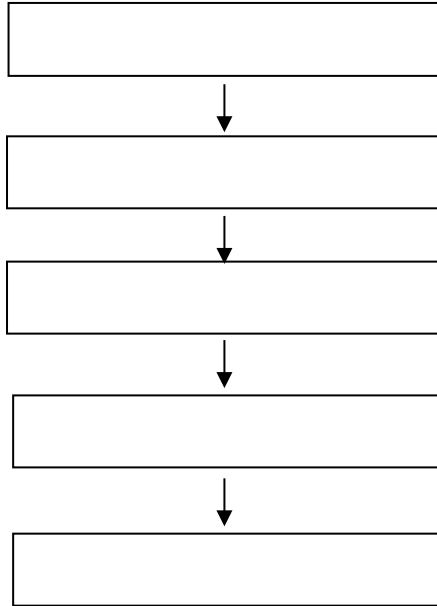
SHAEC25022613804

2025 09 04

12

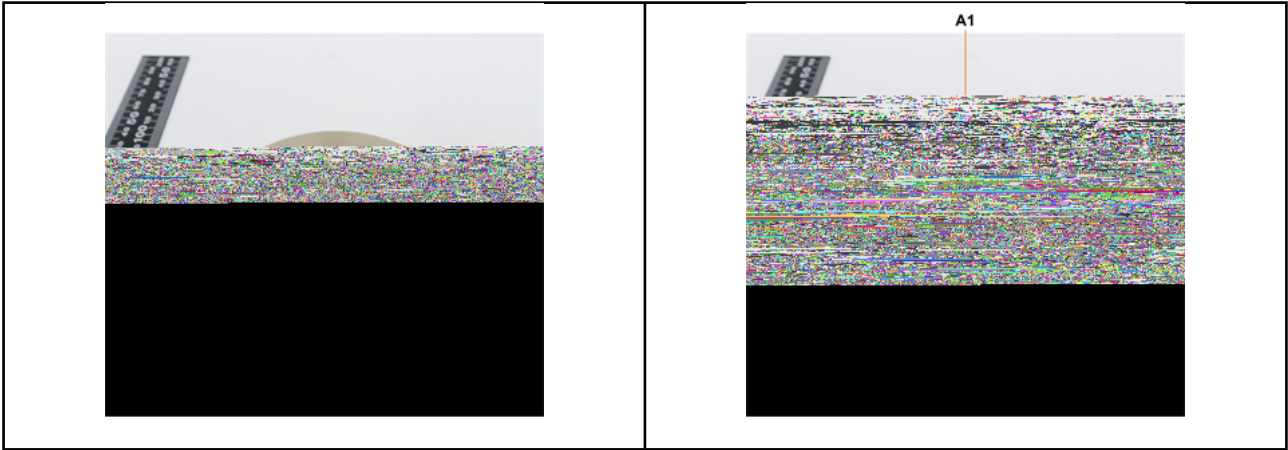
13

(SVHC)



(SVHC)

I J - L /



SGS
