



SHAEC25022612406

2025 09 04

1 15

(SVHC)

26

GPP
2025.08

SGS

SHP25-027766

2025 08 28

2025 08 28 ~ 2025 09 04

SVHC

(i) (2025 6 25
1907/2006 REACH) 250
(SVHC)

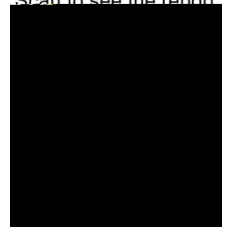
SVHC

(i) 1 (SVHC)
(ii) REACH) 5 (SVHC) (1907/2006

Scan to see the report



Carol Luo





(SVHC)

SHAEC25022612406

2025 09 04

2 15



(SVHC)

1.

<http://echa.europa.eu/web/guest/candidate-list-table>

2. REACH

2.1

1907/2006 EC 33 57 59
0.1%

1907/2006 EC 57
59 (a) 1 / / 7 4 (b)
0.1%

2021 1 5 0.1% w/w
SVHC 2008/98/EC ECHA
SCIP

2.2

SVHC

31 1907/2006 REACH

2.3

0.1% (w/w) / 1272/2008 CLP
1907/2006 REACH

(SDS)

- 1272/2008 CLP
- 1272/2008 CLP
1272/2008 CLP ;
- 1272/2008 CLP

(a) 0.2 1 (w/w)

(b) PBT vPvB 0.1 (w/w)

(c) 0.1

(w/w)

(d)

(w/w)



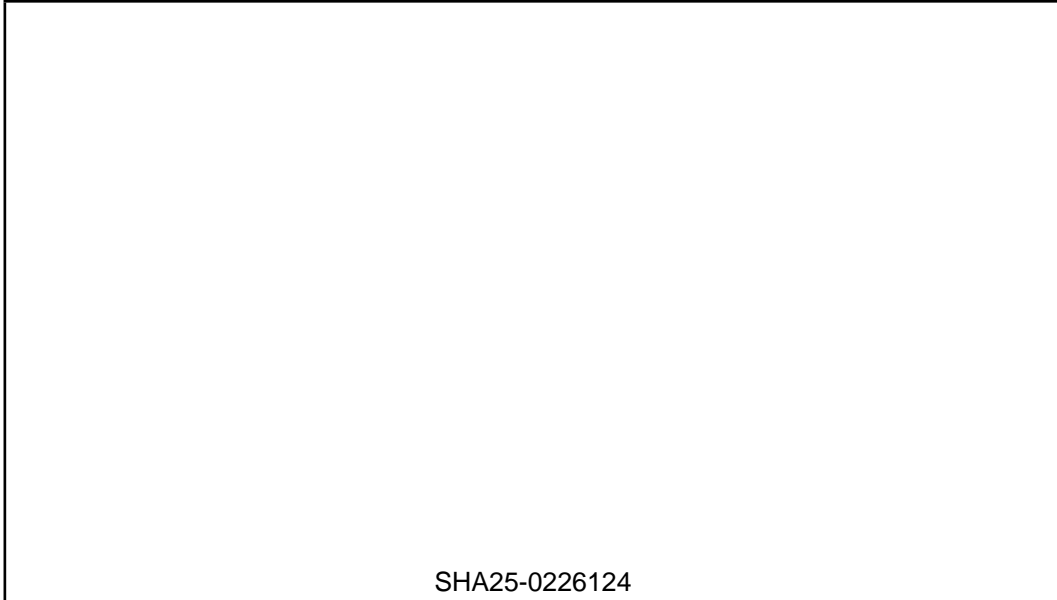
SHAEC25022612406

2025 09 04

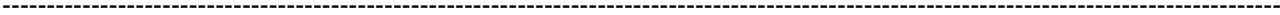
4

15

(SVHC)



SHA25-0226124



SGS



(SVHC)

SVHC

		CAS No.	001 (%)	RL (%)
I	*	1303-28-2	NA^	0.010
I	*	1327-53-3	NA^	0.010
I	*	7784-40-9	NA^	0.010
I	*	15606-95-8	NA^	0.010
VI	*	7778-39-4	NA^	0.010
VI	*	7778-44-1	NA^	0.010
VI	*	3687-31-8	NA^	0.010
VIII	*	20837-86-9	NA^	0.010
VIII	*	10099-74-8	NA^	0.010
VIII	*	1317-36-8	NA^	0.010
VIII	*	12036-76-9	NA^	0.010
VIII	*	1314-41-6	NA^	0.010
VIII	*	8012-00-8	NA^	0.010
VIII	*	62229-08-7	NA^	0.010
VIII	*	12202-17-4	NA^	0.010
VIII	*	1319-46-6	NA^	0.010
X	*	301-04-2	NA^	0.010
XIX		7439-92-1	2.830	0.010
-	SVHC	-	ND	-

SVHC

		CAS No.	001 (%)	RL (%)
/	SVHC	-	ND	-

(1) SVHC RL SVHC SVHC

(2) RL = (RL RL)

ND = (RL) ND SVHC

(3) *

**

ICP-OES

ICP-OES

RL = 0.01% ((VI))
 RL = 0.001% (RL=0.005% (VI) RL= 0.005%(

(4) § (CAS No.: 90-94-8) (CAS No.: 101-61-1) 0.1%(w / w)

SVHC

(5)



SHAEC25022612406

2025 09 04

6

15

(SVHC)

(6)

/

(7) / =

SVHC

NA^ =

SVHC

ILAC-G8:09/2019

w=0



SHAEC25022612406

2025 09 04

7

15

(SVHC)

SVHC:

				CAS No.	RL (%)
I	1	4,4'-	(MDA)	101-77-9	0.100
I	2	2,4,6-	-5- ()	81-15-2	0.100
I	3	C10-13	()	85535-84-8	0.100
I	4			120-12-7	0.100
I	5		(BBP)	85-68-7	0.100
I	6		(2-) (DEHP)	117-81-7	0.100
I	7		(TBTO)	56-35-9	0.100
I	8		*	7646-79-9	0.010
I	9		*	1303-28-2	0.010
I	10		*	1327-53-3	0.010
I	11		(DBP)	84-74-2	0.100
I	12	(HBCDD) HBCDD, -HBCDD, -HBCDD)	(-	-	0.100
I	13		*	7784-40-9	0.010
I	14		*	10588-01-9 /7789-12-0	0.010
I	15		*	15606-95-8	0.010
II	16	2,4-		121-14-2	0.100
II	17		**	90640-80-5	0.100
II	18		**	90640-81-6	0.100
II	19		**	91995-15-2	0.100
II	20		**	91995-17-4	0.100
II	21		**	90640-82-7	0.100
II	22			84-69-5	0.100
II	23		*	7758-97-6	0.010
II	24	(C.I. 104)*		12656-85-8	0.010
II	25	(C.I. 34)*		1344-37-2	0.010
II	26		**	65996-93-2	0.100
II	27	(2-)		115-96-8	0.100
II	28			79-06-1	0.100
III	29		*	7789-09-5	0.010
III	30		*	-	0.010
III	31		*	12179-04-3 /1303-96-4 /1330-43-4	0.010
III	32		*	7789-00-6	0.010
III	33		*	7778-50-9	0.010
III	34		*	7775-11-3	0.010
III	35		*	12267-73-1	0.010
III	36			79-01-6	0.100
IV	37			110-80-5	0.100



(SVHC)

				CAS No.	RL (%)	
IV	38			109-86-4	0.100	
IV	39			-	0.010	
IV	40		*	1333-82-0	0.010	
IV	41		*	513-79-1	0.010	
IV	42		*	71-48-7	0.010	
IV	43		*	10141-05-6	0.010	
IV	44		*	10124-43-3	0.010	
V	45		1,2,3-	96-18-4	0.100	
V	46	1,2-	- (C6-8)	(C7)	71888-89-6	0.100
V	47	1,2-	- (C7-11)	()	68515-42-4	0.100
V	48		1- -2-	872-50-4	0.100	
V	49			111-15-9	0.100	
V	50			302-01-2	0.100	
V	51			/7803-57-8	0.100	
V	51		*	7789-06-2	0.010	
VI	52		1,2-	107-06-2	0.100	
VI	53	4,4'-	-3,3'-	101-14-4	0.100	
VI	54		2-	90-04-0	0.100	
VI	55			140-66-9	0.100	
VI	56			-	0.010	
VI	57		*	7778-39-4	0.010	
VI	58					

(SVHC)

			CAS No.	RL (%)
VII	79		75-12-7	0.100
VII	80		17570-76-2	0.010
VII	81	N,N,N',N'- 4,4'- ()	101-61-1	0.100
VII	82	1,3,5- ()-1,3,5- 2,4,6-(1H, 3H,5H)- (TGIC)	2451-62-9	0.100
VII	83	C.I. 4§	6786-83-0	0.100
VII	84	1,3,5- -[(2S 2R)-2,3-]-1,3,5- 2,4,6-(1H, 3H, 5H)- (-TGIC)	59653-74-6	0.100
VIII	85		69011-06-9	0.010
VIII	86	1,2- - ()	84777-06-0	0.100
VIII	87		629-14-1	0.100
VIII	88	1-	106-94-5	0.100
VIII	89	3- -2- -2-(3-)-1,3-	143860-04-2	0.100
VIII	90		-	0.100
VIII	91	4,4'- -3,3'-	838-88-0	0.100
VIII	92	4,4'-	101-80-4	0.100
VIII	93	4-	60-09-3	0.100
VIII	94	2,4-	95-80-7	0.100
VIII	95	4- ()	-	0.100
VIII	96	2- -5-	120-71-8	0.100
VIII	97		51404-69-4	0.010
VIII	98	4-	92-67-1	0.100
VIII	99	(DecaBDE)	1163-19-5	0.100
VIII	100	-1,2- , - -1,2-	-	0.100
VIII	101		123-77-3	0.100
VIII	102	(DBTC)	683-18-1	0.100
VIII	103		64-67-5	0.100
VIII	104		605-50-5	0.100
VIII	105		77-78-1	0.100
VIII	106		88-85-7	0.100
VIII	107	() *	12578-12-0	0.010
VIII	108	C16-18- *	91031-62-8	0.010
VIII	109		110-00-9	0.100
VIII	110		2058-94-8	0.100
VIII	111		376-06-7	0.100
VIII	112	, 1- , 4- , 3-	-	0.100
VIII	113		13814-96-5	0.010
VIII	114		20837-86-9	0.010
VIII	115		10099-74-8	0.010

(SVHC)

			CAS No.	RL (%)
VIII	116	*	1317-36-8	0.010
VIII	117	*	12036-76-9	0.010
VIII	118	*	1314-41-6	0.010
VIII	119	*	12060-00-3	0.010
VIII	120	*	12626-81-2	0.010
VIII	121		625-45-6	0.100
VIII	122	1,2-	75-56-9	0.100
VIII	123	N,N-	68-12-2	0.100
VIII	124	N-	79-16-3	0.100
VIII	125		776297-69-9	0.100
VIII	126	-	97-56-3	0.100
VIII	127	2-	95-53-4	0.100
VIII	128		72629-94-8	0.100
VIII	129	*	12065-90-6	0.010
VIII	130	*	8012-00-8	0.010
VIII	131	*	68784-75-8	0.010
VIII	132	*	11120-22-2	0.010
VIII	133	*	62229-08-7	0.010
VIII	134	*	78-00-2	0.010
VIII	135	*	12202-17-4	0.010
VIII	136		307-55-1	0.100
VIII	137	*	1319-46-6	0.010
VIII	138	*	12141-20-7	0.010
IX	139	4- ()	-	0.100
IX	140	(APFO)**	3825-26-1	0.100
IX	141	*	1306-19-0	0.010
IX	142		7440-43-9	0.010
IX	143	(DPP)	131-18-0	0.100
IX	144	(PFOA)	335-67-1	0.100
X	145	*	1306-23-6	0.010
X	146		84-75-3	0.100
X	147	C.I. 28	573-58-0	0.100
X	148	C.I. 38	1937-37-7	0.100
X	149	2-	96-45-7	0.100
X	150	*	301-04-2	0.010
X	151		25155-23-1	0.100
XI	152	()	68515-50-4	0.100
XI	153	*	10108-64-2	0.010
XI	154	*	-	0.010
XI	155	*	7632-04-4	0.010
XII	156	2-(2H- -2-)-4,6-328) (UV-	25973-55-1	0.100

(SVHC)

				CAS No.	RL (%)	
XII	158	- (2-) (DOTE)	15571-58-1	0.100	
XII	159		*	7790-79-6	0.010	
XII	160		*	10124-36-4 /31119-53-6	0.010	
XII	161	- (2-) (DOTE) - (2-) (MOTE)	-	0.100
XIII	162	1,2-	, (C6-10) / 1,2-	-	0.100	
XIII	163	5-	-2-(2,4- -3- -1-)-5- -1,3- [1] 5- -2-(4,6- -3- -1-)-5- -1,3- [2] [[1] [2]]	-	0.100	
XIV	164		1,3-	1120-71-4	0.100	
XIV	165	2,4-	-6-(5- -2- (UV-327)	3864-99-1	0.100	
XIV	166	2-(2H-	-2-)-4-()-6-() (UV-350)	36437-37-3	0.100	
XIV	167			98-95-3	0.100	
XIV	168			-	0.100	
XV	169		(a)	50-32-8	0.100	
XVI	170	4,4'-	(A)	80-05-7	0.100	
XVI	171	4-	()	-	0.100	
XVI	172		(PFDA)	-	0.100	
XVI	173			80-46-6	0.100	
XVII	174		-1-	-	0.100	
XVIII	175	()	()	-	0.100	
XVIII	176		(BaA)	56-55-3	0.100	
XVIII	177		*	10325-94-7	0.010	
XVIII	178		*	513-78-0	0.010	
XVIII	179		*	21041-95-2	0.010	
XVIII	180		(CHR)	218-01-9	0.100	
XVIII	181	1,3,4- 4-	-2,5- (RP-HP)[0.1%]	-	0.100	
XIX	182	1,2,4-	() (TMA)	552-30-7	0.100	
XIX	183	(g,h,i)	() (BPE)	191-24-2	0.100	
XIX	184		(D5)	541-02-6	0.100	
XIX	185		(DCHP)	84-61-7	0.100	
XIX	186		*	12008-41-2	0.010	

(SVHC)

			CAS No.	RL (%)
XXVI	222	S-([5.2.1.0'2,6] -3- -8(9)-) O-(2-) O-(2-)	255881-94-8	0.100
XXVI	223	- (2-)	1067-53-4	0.100
XXVII	224	N-	924-42-5	0.100
XXVIII	225	1,2- (2,4,6-)	37853-59-1	0.100
XXVIII	226	A	79-94-7	0.100
XXVIII	227	S	80-09-1	0.100
XXVIII	228	*	13701-59-2	0.005
XXVIII	229	(2-)	-	0.100
XXVIII	230		4247-02-3	0.100
XXVIII	231		108-78-1	0.100
XXVIII	232		-	0.100
XXVIII	233	*	-	0.060
XXIX	234	(4-)	80-07-9	0.100
XXIX	235	(2,4,6-)	75980-60-8	0.100
XXX	236	2,4,6-	732-26-3	0.100
XXX	237	2-(2'- -5'-) (UV-329)	3147-75-9	0.100
XXX	238	2-(4-)-2-()-1-(4-)- 1- (PI-379)	119344-86-4	0.100
XXX	239	(UV-326)	3896-11-5	0.100
XXX	240	2-	-	0.100
XXXI	241		80-43-3	0.100
XXXI	242		115-86-6	0.100
XXXII	243	6-[(C10-C13)- -(,)-2,5- -1-]	2156592-54-8	0.100
XXXII	244	O,O,O-	597-82-0	0.100
XXXII	245		107-51-7	0.100
XXXII	246		338-83-0	0.100
XXXII	247		192268-65-8	0.100
XXXIII	248	()	17928-28-8	0.100
XXXIII	249		141-62-8	0.100
XXXIII	250	51	-	0.100
/	251		108-46-3	0.100
/	252		141-63-9	0.100
/	253		110-54-3	0.100
/	254	4,4'- (BPF)	620-92-8	0.100
/	255	4,4'-[2,2,2'- -1-()] (BPAF)	-	0.100
/	256	(DBDPE)	84852-53-9	0.100



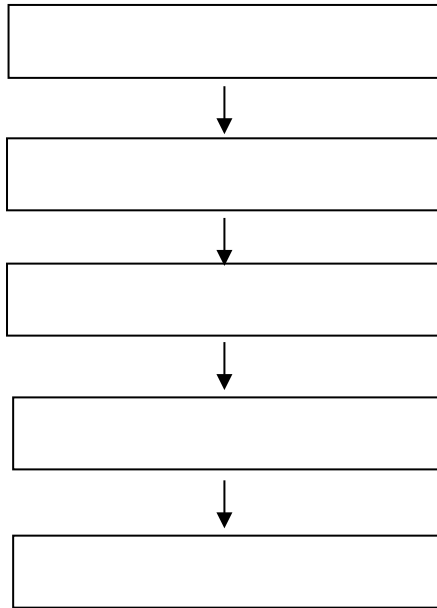
SHAEC25022612406

2025 09 04

14

15

(SVHC)





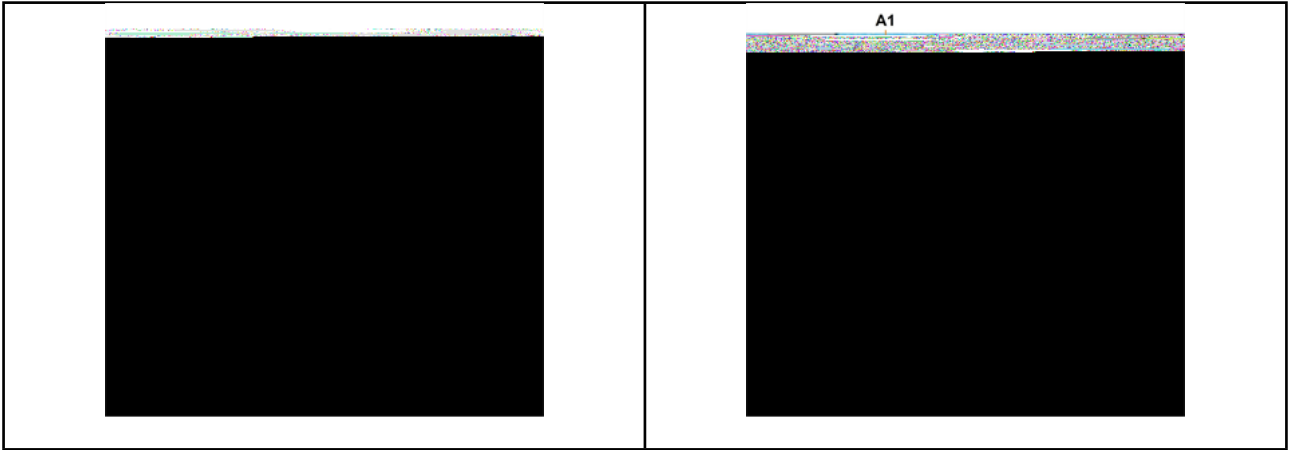
SHAEC25022612406

2025 09 04

15

15

(SVHC)



SGS
